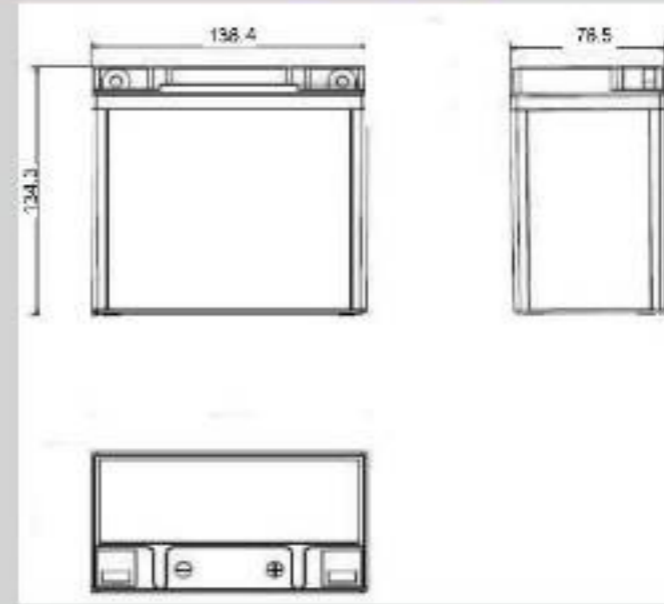


**12 MC 9 (12V 9Ah)**  
motorcycle use



**RAEMT**

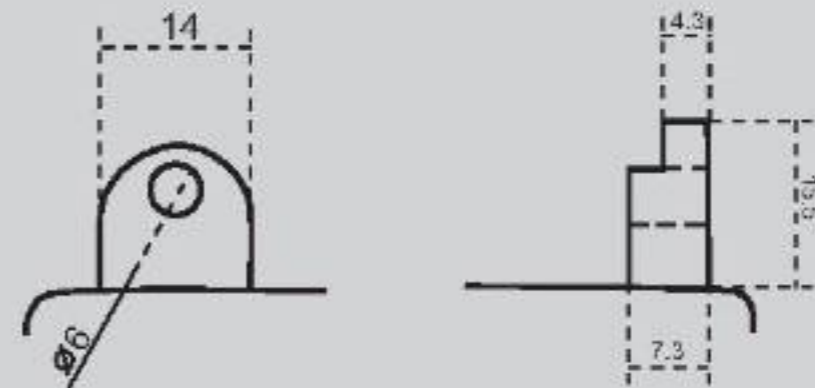
**Outer Dimensions (mm)**



**Specifications**

Nominal Voltage		12 V
Rated Capacity ( 10 Hour Rate )		9 Ah
Dimensions	Total Height	134.3 mm
	Height	134.3 mm
	Length	136.4 mm
	Width	76.5 mm
Container Material		ABS (UL94-HB/V0)
Weight Approx (±2.5%)		2.9 Kg

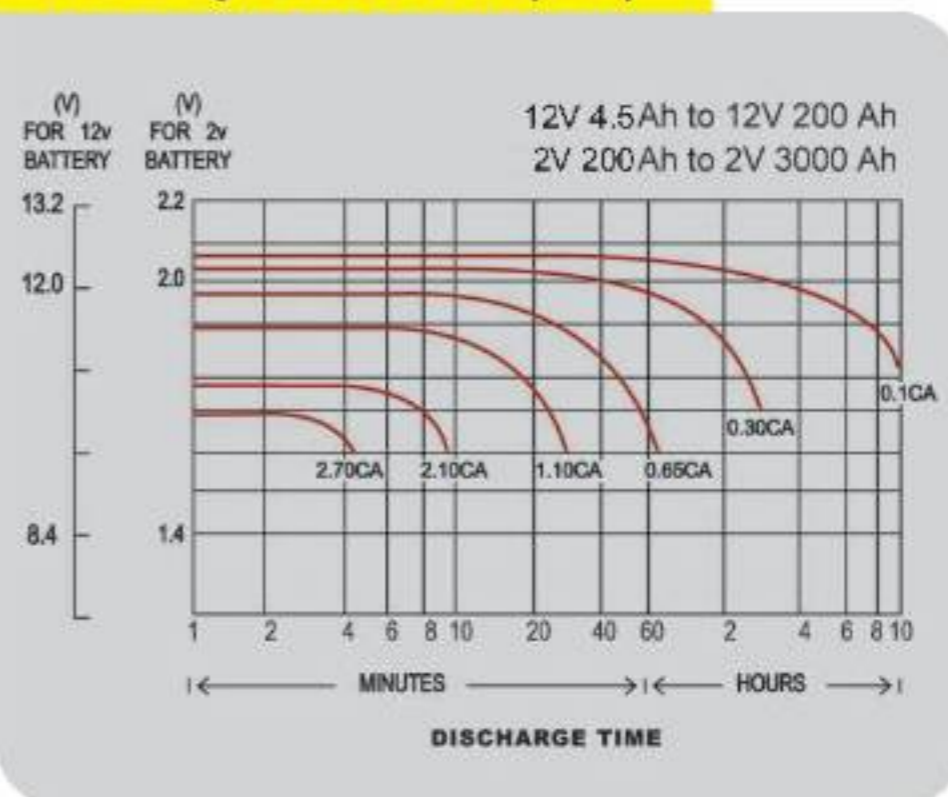
**Terminal Type (mm)**



**Characteristics**

Capacity 25°C (77°F)	10 hour-rate	9 Ah
	3 hour-rate	6.36 Ah
	1 hour-rate	4.68 Ah
Internal Resistance	Full Charge Battery at 25°C (77°F)	20 mΩ
Self-Discharge at 25°C (77°F)	Capacity After The 3 Month of Storage	91 %
	Capacity After The 6 Month of Storage	82 %
	Capacity After The 12 Month of Storage	64 %

**Discharge Curves 25°C (77°F)**



International Standard Number : JIS D 5302(1997)

ISIRI Number : 6197 ( 1<sup>st</sup> Edition)